

MMP3 (aa459-473) Antibody (C-Term)
Peptide-affinity purified goat antibody
Catalog # AF3849a**Specification**

MMP3 (aa459-473) Antibody (C-Term) - Product Information

Application	WB, IHC, Pep-ELISA
Primary Accession	P08254
Other Accession	NP_002413.1 , 4314
Reactivity	Human
Host	Goat
Clonality	Polyclonal
Concentration	0.5 mg/ml
Isotype	IgG
Calculated MW	53977

MMP3 (aa459-473) Antibody (C-Term) - Additional Information**Gene ID** 4314**Other Names**

Stromelysin-1, SL-1, 3.4.24.17, Matrix metalloproteinase-3, MMP-3, Transin-1, MMP3, STMY1

Dilution

WB~~1:1000

IHC~~1:100~500

Pep-ELISA~~N/A

Format

0.5 mg/ml in Tris saline, 0.02% sodium azide, pH7.3 with 0.5% bovine serum albumin

Storage

Maintain refrigerated at 2-8°C for up to 6 months. For long term storage store at -20°C in small aliquots to prevent freeze-thaw cycles.

Precautions

MMP3 (aa459-473) Antibody (C-Term) is for research use only and not for use in diagnostic or therapeutic procedures.

MMP3 (aa459-473) Antibody (C-Term) - Protein Information**Name** MMP3**Synonyms** STMY1**Function**

Metalloproteinase with a rather broad substrate specificity that can degrade fibronectin, laminin,

gelatins of type I, III, IV, and V; collagens III, IV, X, and IX, and cartilage proteoglycans. Activates different molecules including growth factors, plasminogen or other matrix metalloproteinases such as MMP9 (PubMed:11029580, PubMed:1371271). Once released into the extracellular matrix (ECM), the inactive pro-enzyme is activated by the plasmin cascade signaling pathway (PubMed:2383557). Also acts intracellularly (PubMed:22265821). For example, in dopaminergic neurons, gets activated by the serine protease HTRA2 upon stress and plays a pivotal role in DA neuronal degeneration by mediating microglial activation and alpha- synuclein/SNCA cleavage (PubMed:21330369). In addition, plays a role in immune response and possesses antiviral activity against various viruses such as vesicular stomatitis virus, influenza A virus (H1N1) and human herpes virus 1 (PubMed:35940311). Mechanistically, translocates from the cytoplasm into the cell nucleus upon virus infection to influence NF-kappa-B activities (PubMed:35940311).

Cellular Location

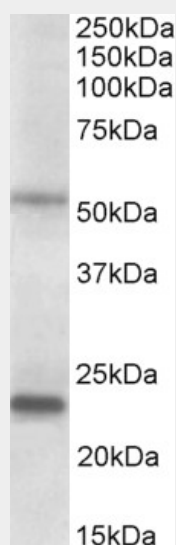
Secreted, extracellular space, extracellular matrix. Nucleus. Cytoplasm

MMP3 (aa459-473) Antibody (C-Term) - Protocols

Provided below are standard protocols that you may find useful for product applications.

- [Western Blot](#)
- [Blocking Peptides](#)
- [Dot Blot](#)
- [Immunohistochemistry](#)
- [Immunofluorescence](#)
- [Immunoprecipitation](#)
- [Flow Cytometry](#)
- [Cell Culture](#)

MMP3 (aa459-473) Antibody (C-Term) - Images



AF3849a (0.2 µg/ml) staining of Prostate lysate (35 µg protein in RIPA buffer). Primary incubation was 1 hour. Detected by chemiluminescence.

MMP3 (aa459-473) Antibody (C-Term) - References

Identification of proline residues in or near the transmembrane helices of the human breast cancer resistance protein (BCRP/ABCG2) that are important for transport activity and substrate specificity. Ni Z, Bikadi Z, Shuster DL, Zhao C, Rosenberg MF, Mao Q. Biochemistry. 2011 Sep 20;50(37):8057-66. PMID: 21854076